

monoray 532

Green Laser

532nm Photocoagulator



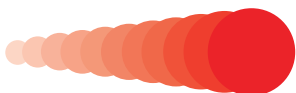


Green Laser Photocoagulator

- Ideal product for Retinal Therapy.
- Powerful & Reliable: The Diode Pumped Solid State technology cavity delivers 3 W of power from the compact system.

Monoray 532 Features

- ParFocal zoom system - delivering a homogeneous, sharply defined and reproducible laser spot to the retina without heat-related side effects on the patient's cornea.
- Programmable Parameter Presets.
- Laser and illumination are co-axially synchronized for increased ergonomics
- True color active physician safety filters coupled with therapy laser - for a brilliant slit lamp image.
- Thermoelectric cooling with enhanced Laser stability management - for reliable and reproducible laser therapy results without performance fluctuations.



Motorized variable spot size

- The single spot size is variable from 50 to 500um
- Pattern spot size 100 to 500 um
- The spot size can be varied easily using touch screen



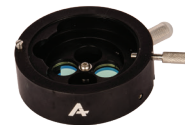
User Friendly Interface

- Control Panel and Full touch graphical colour display put all your operations in fingertips
- Easy Selection of delivery system



Foot pedal with Power Controls

- Convenience of hands free adjustment
- Uninterrupted procedure for increased visual focus



Optional Accessories Microscope Safety Filter

Delivery System Options



LABOMED Integrated Slitlamp with 5 step Magnification



LIO integrated with Keeler (Wire and Wireless), provides unique controls of aperture size and spot position.



Endo Ocular Probes (20, 23, 25 gauge - straight & Curved)

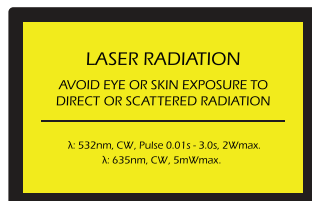


External Laser Delivery System (ELDS)

- Single spot delivery at slitlamp working distance
- Spot size 50 -500µm
- Easy to adopt any slitlamp Tono mount

Technical Specification

Laser type	Diode-pumped solid-state laser 532nm wavelength
Laser power	SLA & LIO mode: 1500mW at cornea ENDO mode: 2000mW at cornea
Exposure time (single spot)	10mS - 10Sec
Exposure interval (single spot)	10mS - 10Sec
Aiming beam	635nm diode laser, adjustable brightness upto 1mW
Spot size	Single: 50µm, 100µm, 200µm, 300µm, 400µm, 500µm
Cooling system	Thermoelectric cooler and fan cooled
Electrical requirement	100 - 240 VAC, 50 / 60 Hz
Dimensions	Console: 19cm(H)x30cm(W)x30cm(L) SLA table: 73cm(H)x100cm(W)x40cm(L)
Weight	Console: 6 Kg / 13.2 lbs SLA table: 63 Kg / 139 lbs



Mfg by:

AEON MEDITEC (INDIA) PVT LTD.

No 15, Kadampadi Amman Koil 3rd Street,
Bhuaneswari Nagar, Valasaravakkam, Chennai - 600087
Mob : 8012531317

